



KS118 Active Subwoofer

KEY FEATURES

- Very high output with impressive low frequency performance
- 3600 Watt Class D amplifier module
- 18 inch (460 mm) long excursion direct radiating driver
- Omni-directional or cardioid radiation modes (cardioid setup requires min. 2 units)
- Selectable DEEP™ mode for extremely low frequency extension
- Adjustable crossover and delay
- Scenes for commonly-used applications that can be saved/recalled
- Refined, professional and elegant appearance in any application
- Rugged painted wood enclosure for lasting durability
- Vertical or horizontal deployment (M20 threaded pole receiver for vertical setup)
- Four low-noise, heavy-duty casters
- Optional transport cover, KS-LOC security cover and 35 mm loudspeaker pole access-ories available
- 6 Year Warranty when registered within 30 days of purchase



KS118

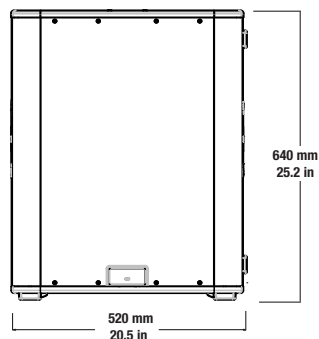
Live Music • Clubs/Venues • DJs/Dance • AV Rental/Event Production

The KS118 is a very high output active subwoofer producing impressive low frequencies for mobile entertainers, AV production and clubs/venues applications.

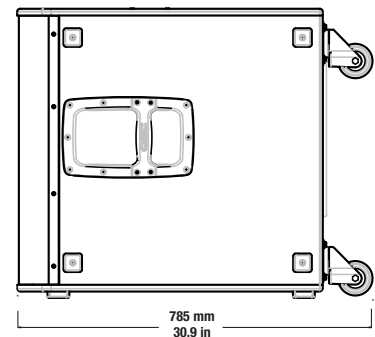
The KS118 is a very high output active subwoofer producing impressive low frequencies for mobile entertainment, AV production, clubs and performance venues. Featuring an 18-inch direct radiating driver powered by a 3600 Watt Class D amplifier, the KS118 delivers high sound pressure levels with dynamic and musical sound reproduction of very low frequencies.

On-board DSP optimizes and protects system performance as well as offers advanced capabilities such as the ability to array two units in a cardioid arrangement. Highly transportable, the rugged enclosure features comfortable handles and four low noise casters. An M20 threaded pole receptacle accepts a 35 mm pole for easy vertical deployment with full-range loudspeakers.

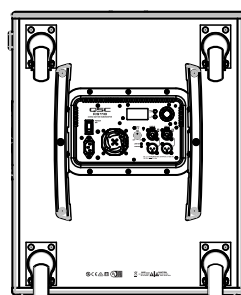
Front



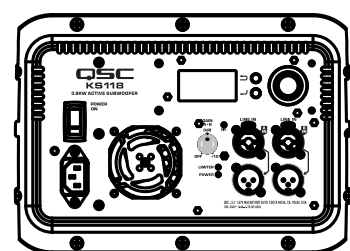
Side



Back



KS118 Control Panel



**6 year
warranty**

When registered within
30 days of purchase

KS118 Specifications

KS118	
Configuration:	Direct Radiating
LF Transducer:	18-inch (460 mm), Cone
Frequency Response (-6 dB):	41 Hz - 98 Hz
Frequency Range (-10 dB):	35 Hz - 111 Hz
Nominal Coverage Angle:	Omni-directional or cardioid radiation modes (cardioid setup requires min. 2 units)
Maximum Rated SPL ¹ :	136 dB @ 1 m (peak)
Amplifier:	Class D 3600 W (peak)
Cooling:	Low-noise, variable speed fan
Controls:	Power On/Off Gain Control Rotary encoder 2 x selection buttons
Indicators:	2 x Power LED (front and rear) Input Signal LED Limiter active LED
Connectors:	2 x locking XLR/F ¼ in combo 2 x XLR/M (Loop-Thru Output) 1 x Locking IEC Power Connector
AC Power Input:	Universal power supply 100 – 240 VAC, 50 – 60 Hz
AC Power Consumption (1/8th Power)	100 VAC, 3.6 A / 120 VAC, 3.0 A / 240 VAC, 1.7 A
Enclosure Details	
Enclosure:	15 mm Birch Plywood
Color:	Black (RAL 9011)
Grille:	16-gauge Black Powder Coated Steel
Dimensions (HxWxD):	640 x 520 x 785 mm (incl. casters) 25.2 x 20.5 x 30.9 inches (incl. casters)
Net Weight: (including casters)	47 kg (104 lbs)
Shipping Weight:	56.5 kg (124.5 lb)
Regulatory:	CE, WEEE, UL, China RoHS, RoHS II, FCC Class B
Included Accessories:	4 x Low-Noise, Heavy Duty Casters
Optional Accessories:	KS118-CVR Transport Cover, KS-LOC Lock-Out Cover SP-26 and SP-36 Loudspeaker Poles, SP-16X Extension Pole

¹ Peak SPL is measured on-axis at 1m, pink noise crest factor 10 dB, unweighted Continuous SPL is based on theoretical calculations based upon transducer sensitivity and peak available power (for comparison purpose and in accordance with common industry practice).

Specifications subject to change without notice.

0417-2025-BN



+1-800-854-4079 | +1-714-754-6175 | www.qsc.com

QSC, LLC, 1675 MacArthur Boulevard, Costa Mesa, CA 92626 USA. ©2019 QSC, LLC. All rights reserved. QSC, the QSC logo and PLAY OUT LOUD are registered trademarks of QSC, LLC in the U.S. Patent and Trademark Office and in other countries. Directivity Matched Transition™, Intrinsic Correction, and the QSC World of K logo are trademarks of QSC, LLC. Specifications subject to change without notice.