



# CB10

## Compact Battery-Powered Loudspeaker System

### Key Features

- **High-performance, compact 2-way system** featuring a high excursion 10-inch (254 mm) low-frequency driver and a 1-inch (25.4 mm) compression driver for clear high-frequency response without distortion.
- Light and portable with **battery and AC power** options for versatile use.
- **Integrated 3-channel mixer** with remote control via **QSC Loudspeaker Control App** for easy operation and customization.
- Two **combo XLR inputs** with independent Factory Presets, ideal for small event's needs.
- Useful on-board **Room Delay** (up to 200 ms) for larger distributed PA deployments.
- **Tilt-back angle** for perfect floor deployment and sound coverage; can also be stand or pole mounted.
- **Bluetooth 5.1** for control and audio with True Wireless Stereo (TWS) for low latency pairing between loudspeakers and music source.
- **6 Year Warranty** with product registration within 30 days of purchase (1 Year Warranty on battery).

### AV Rental/Event Productions | Universal Portable PA System DJs/Mobile Entertainers | Musicians/Bands

The CB10 is the ultimate compact loudspeaker system, offering unrivaled audio performance, unmatched versatility and battery-powered portability. Ease-of-use is further enhanced with Bluetooth® audio and control via the QSC Loudspeaker Control App.

The CB10 is ideal for DJs and mobile entertainers, event production professionals, musicians and bands, and any application where high performance audio is needed with the portability and versatility of a battery-powered system.

The CB10's compact but powerful 10-inch LF driver delivers exceptional low-end reproduction and extension, while its class-leading 1-inch compression driver ensures superior high-frequency response and coverage, without distortion. The integrated 3-channel mixer allows simple and easy connections of microphones and instruments, as well as the option to stream Bluetooth® music. Input presets and DSP further optimize system performance and ease of setup, while the intuitive rear panel coupled with expanded control via the QSC Loudspeaker Control app, offers simple plug-and-play operation and more expansive customization. Additionally, programmable room delay makes the CB10 an ideal system extension for distributed PA deployments.

The CB10 can be mounted on a loudspeaker stand or deployed on the floor via its tilt-back angle. CB10 is backed by a 6-Year Warranty with product registration within 30 days of purchase (1 Year Warranty on battery).



When registered within  
30 days of purchase

## CB10

Configuration	Two-way Rechargeable Loudspeaker System
Low Frequency Transducer	254 mm (10-inch), cone
High Frequency Transducer	25.4 mm (1-inch), compression driver
Frequency Response (-6 dB)	51 Hz - 18 kHz
Frequency Range (-10 dB)	47 Hz - 20 kHz
Nominal Coverage Angle	90° Axisymmetric
Maximum Rated SPL <sup>1</sup> (peak)	127 dB @ 1 m
Amplification (peak)	Class D, 440 W
Cooling	Convection cooling
Backpanel Controls	3 x Rotary level potentiometers (Gain) 2 x MIC Boost Push-Switch 2 x 6-way Contour Selection Rotary-Switch (featuring <b>CUSTOM APP</b> controls) 1 x Bluetooth Switch 1 x Output Select Switch 1 x AC Power Switch
<b>Loudspeaker Control App</b> Functions	Input Channels: Gain Control, Presets (Channels A and B), EQ Reverb (Channels A and B) Ducker (Channel A) Contour Selection Custom Output Routing Footswitch Functionality: Channel Mute, FX Mute, or Channel Boost Bluetooth Audio Configuration Loudspeaker Firmware Updates
Backpanel Indicators	3 x Input Signal/Clip LEDs 2 x MIC selected LEDs 3 x Battery Charge LEDs 1 x Limiter Active LED 1 x Bluetooth LED 1 x Output Select LED 1 x Power/Standby LED
Connectors	2 x locking XLR/F ¼ inch combo (Line Input and Mic/Line Input) 1 x 3.5 mm TRS (Stereo Input) 1 x 6.3 mm TS (Footswitch) 1 x XLR/M (Mix Output) 1 x locking IEC Power Connector
DC Power (Battery)	Rechargeable Lithium-ION 22.2 V, 4400 mAh, 97 Wh Battery Module (1x unit included with CB10) Battery life: up to 12 hours / Battery charging time: approx. 4 hours
AC Power Input	Universal Power Supply: 100-240 VAC, 50/60 Hz
AC Power Consumption <sup>2</sup>	100 VAC, 1A / 120 VAC, 0.9 / 240 VAC, 0.5A
Enclosure Material	Polypropylene
Color	Black (RAL 9011)
Grille	Powder-coated steel with internal lining (18 Gauge)
Loudspeaker Dimensions (H x W x D)	465 x 313 x 287 mm / 18.3 x 12.3 x 11.3 in
Carton Dimensions (H x W x D)	559 x 406 x 381 mm / 22 x 16 x 15 in
Net Weight	12.2 kg / 26.9 lb
Shipping Weight	14.5 kg / 32 lb
Regulatory	CE, WEEE, TUV, China RoHS, RoHS II, FCC Class A
Optional Accessories	CB10-CVR: Weatherized Cover for the CB10 Loudspeaker System CB10-BATTERY: Rechargeable Lithium-ION 22.2 V, 4400 mAh, 97 Wh Battery Module



(1) Measured at 1 meter, on-axis, in full space, using IEC268 filtered noise.

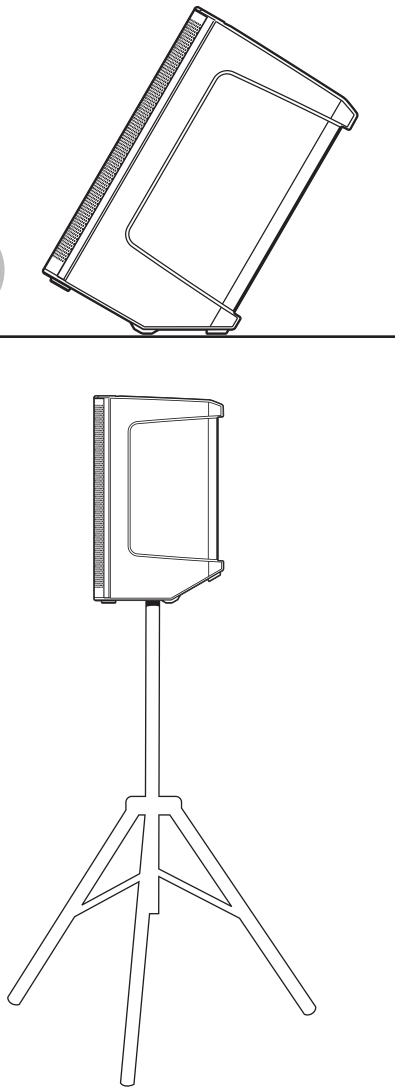
(2) 1/8 power is representative of current draw with typical music program material with occasional clipping.

The Bluetooth® word mark and logos are registered trademarks owned by Bluetooth SIG, Inc.

All specifications are subject to change without notice.

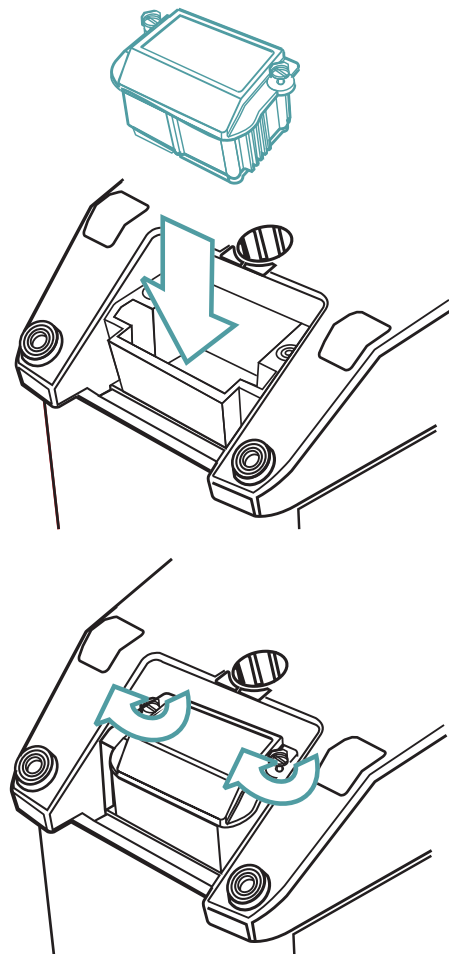
## Deployments

30°

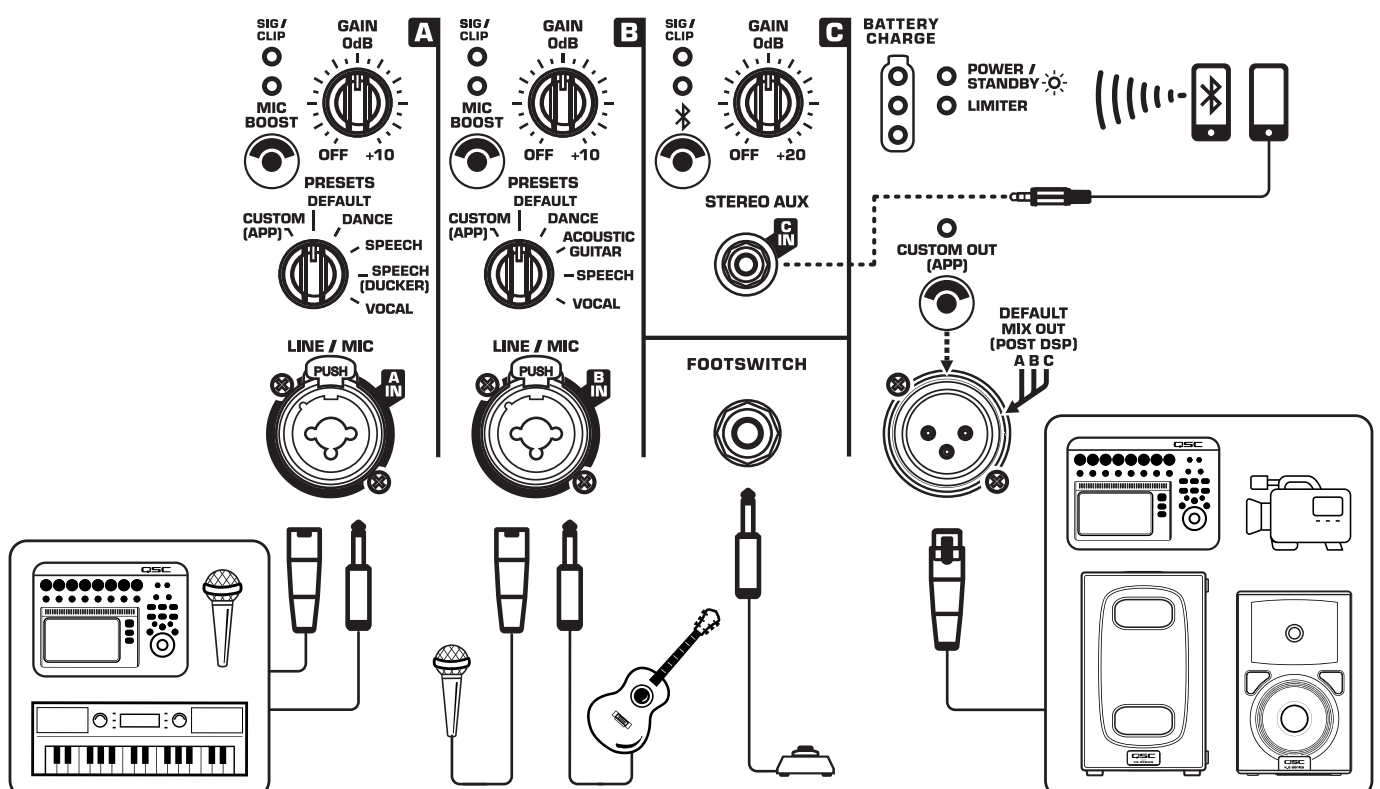


## Battery Installation

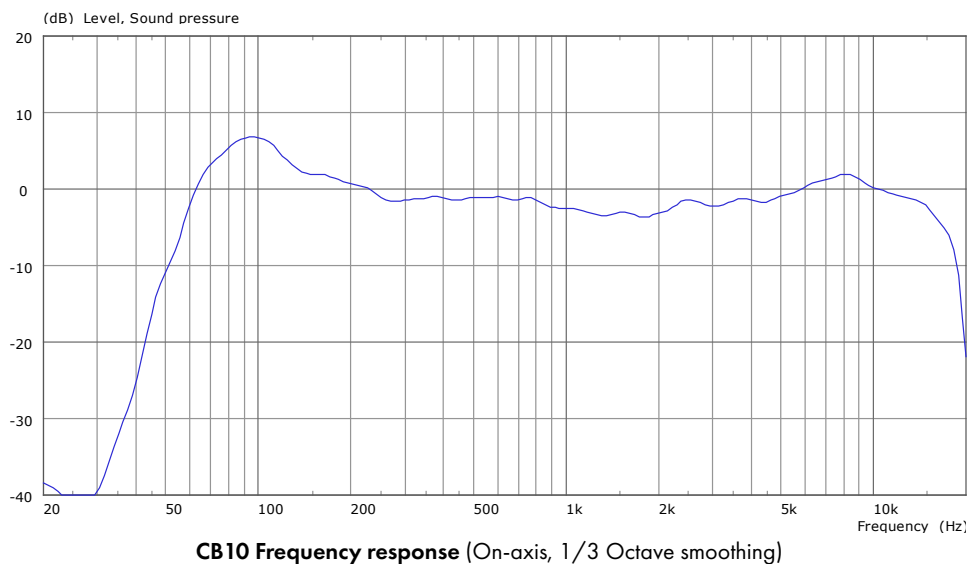
**CB10-BATTERY**  
Rechargeable Battery Module



## Backpanel Controls & Connections



## Measurements



## Dimensions

