



unIFY Control Panel

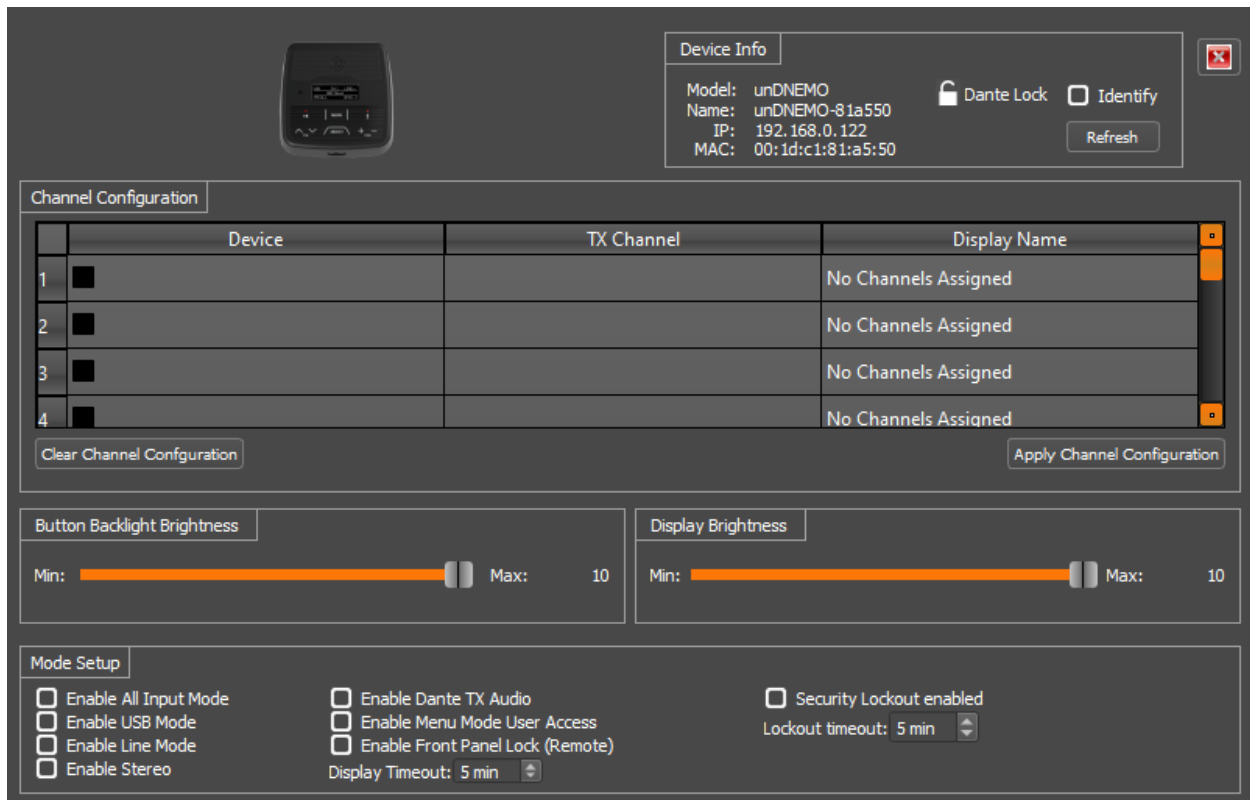
unDNEMO Configuration



QSC, LLC • 1675 MacArthur Boulevard • Costa Mesa, CA 92626
Ph: 800/854-4079 or 714/957-7100 • Fax: 714/754-6174

© 2020 QSC, LLC all rights reserved. QSC and the QSC logo are registered trademarks of QSC, LLC in the U.S. Patent and Trademark office and other countries. All other trademarks are the property of their respective owners. Patents may apply or be pending.

www.qsc.com



The configuration software for the unDNEMO is organized into the following key sections:

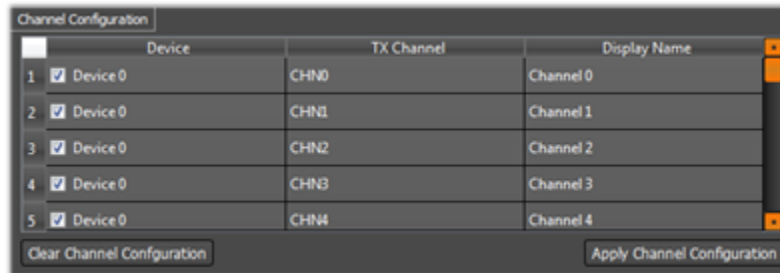
- Channel Configuration
- Device Configuration

Mono Channel Configuration

***NOTE:** The channel configuration/assignment noted below only works for Dante channels. It cannot be used for AES67 channels. AES67 channels are not user selected from the devices front panel like the Dante channels and can only be assigned statically using Dante Controller.

The unDNEMO requires the installer or end user to first select the desired Dante™ audio channels for monitoring on the active Dante™ network. This task is easily performed using the Channel Configuration section of the software.

The channel list control is used to specify which Dante™ channel is assigned to each of the 64 available channel slots available on the unDNEMO.



The Channel Configuration list consists of three columns:

- Device Name
- Device TX Channel
- Display Name

The channel configuration can be done manually by entering the exact Dante™ device name (case sensitive) and channel name into the corresponding fields. However it is recommended to take advantage of the built in drag and drop functionality from the device list to assist in creating the customized channel list. This feature not only minimizes the configuration time needed to setup a device, but it also minimizes errors in assigning device and channel names by removing any chance for misspellings.

Any device that contains Dante™ transmit channels (denoted by a TX in the expanded channel view in the device list), can be assigned by either dragging a single channel label from the device list onto the desired channel list location or by dragging the name of the device in the channel list. If the device name is selected and dragged, then all available channel names will automatically be populated into the channel configuration list.

When channels are applied by the drag and drop feature, the display name is automatically copied over as the Dante™ channel name. If it's desirable for the end user to be presented with a name that differs from the Dante™ channel name on the network then the name may be overridden by entering the desired display name, up to 32 characters in length.

In addition to the channel names, each row of the channel list features an enable checkbox. In order for the channel to be enabled and included in the channel list, this checkbox must be checked. Any channels with the check box not checked will be ignored by the user interface of the unDNEMO.

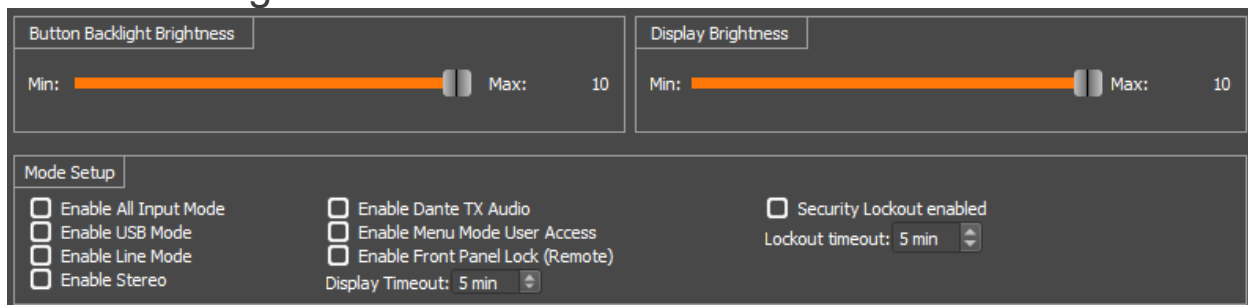
Once all channel configuration settings have been set up, click the “Apply Channel Configuration” button to send the settings to the unDNEMO.

***Note:** *If you are setting up a large number of unDNEMO devices, it is recommended that you also save the configuration as a preset file. Once saved as a file, this preset can then be applied to a multiple unDNEMO devices on the Dante™ network using the Multiple Device Preset Load functional located under the Tools menu.*

Stereo Channel Configuration

In the Mode Setup controls, the user may select “Enable Stereo” to configure the unDNEMO in stereo monitoring mode. When this checkbox is selected, the channel list will be altered to show 32 channel pairs (1- L, 1-R, 2-L, 2-R, etc). The “Display name” field is taken from the name assign to the left hand channel while the right hand channel name is disabled. The same configuration method is used for stereo channel setup as is done for the mono channel monitoring. When the user cycles through the channel list, the audio is output to the corresponding left or right channel when monitoring with headphones. The internal speaker is a mono sum of the two channels.

Device Configuration



The screenshot displays the configuration interface for the unDNEMO. It features two sliders at the top: 'Button Backlight Brightness' and 'Display Brightness', both ranging from a minimum of 1 to a maximum of 10. Below these are the 'Mode Setup' controls, which include several checkboxes: 'Enable All Input Mode', 'Enable USB Mode', 'Enable Line Mode', 'Enable Stereo', 'Enable Dante TX Audio', 'Enable Menu Mode User Access', 'Enable Front Panel Lock (Remote)', and 'Security Lockout enabled'. Additionally, there are dropdown menus for 'Display Timeout: 5 min' and 'Lockout timeout: 5 min'.

Button Backlight Brightness

The unDNEMO features a backlit button keypad for added visibility in low visibility lighting conditions. The backlight brightness is adjustable from a scale of 1 (minimum) to 10 (maximum) using the slider controls.

Display Brightness

The unDNEMO features a high visibility OLED display with adjustable brightness control. The brightness is adjustable from a scale of 1 (minimum) to 10 (maximum) using the slider controls.

Mode Setup

The Mode Setup configuration section allows the installer to customize the capabilities of the unDNEMO for an optimized end user experience.

All Input Mode

The All Input Mode mixes input from the Dante™ network, USB audio input and line input sources simultaneously to provide an all in one audio stream for applications requiring simultaneous monitoring from these multiple audio input sources.

USB Mode

The USB Mode allows the unDNEMO to operate as a USB sound card for bidirectional computer based audio applications.



Line Mode

The Line Mode allows the unDNEMO to operate as a local monitor for an audio device connected to the line input of the unDNEMO.

Stereo

The Enable stereo function configures the unDNEMO to treat all channels in the monitoring list as stereo pairs.

Dante™ TX Audio

- The Dante™ TX audio functionality allows the unDNEMO to bridge audio from the unDNEMO to the Dante™ network as follows:
- Net Mode – Internal or External mic audio is transmit on unDNEMO Dante™ transmit channel 1.
- USB Mode – Audio playback from the connected computer audio source is bridged to the Dante™ audio network on transmit channels 1 (Left) and 2 (right)
- Line Mode – The analog input connected to the Line Input of the unDNEMO is bridged to Dante™ audio network on transmit channels 1 and 2.
- All Input Mode – No TX audio supported.

Menu Mode User Access

The unDNEMO features a menu mode for viewing information about the device and limited configuration of device features.

Display Timeout

The screen on the unDNEMO will suffer burn in if left displaying the same text for long periods so there is a programmable time period after which the screen will turn itself off. By default, the timeout is set to 5 minutes but this can be adjusted from 1 minute to 60 minutes.

Security Lockout Mode

This feature locks the device from user input once the lockout timer has exceeded the set lockout time. Pressing the channel up button “^” and volume up “+” buttons simultaneously for 3 seconds unlocks the device. Once the device is unlocked, pressing additional buttons on the device refreshes the lockout time to the set lockout time.

****Note:** For all controls in the Device Configuration section, changes made in the software will be immediately reflected on the device.*