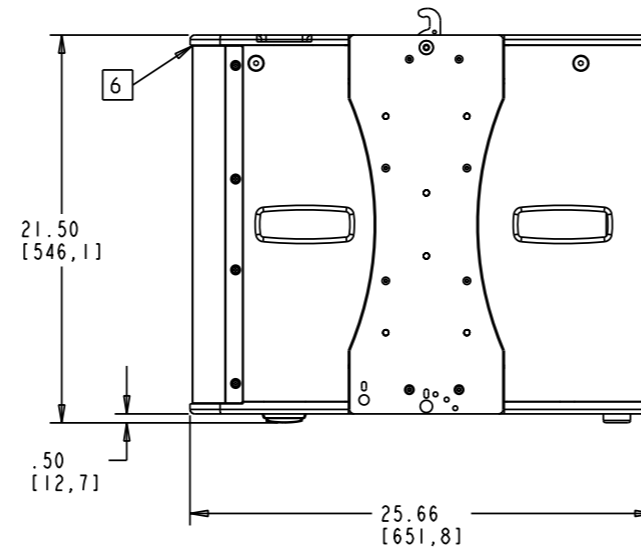
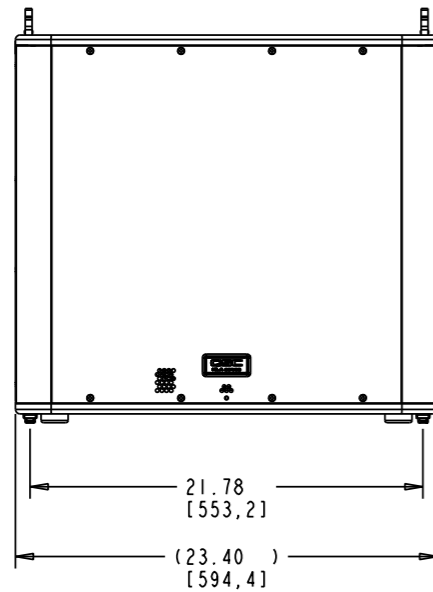
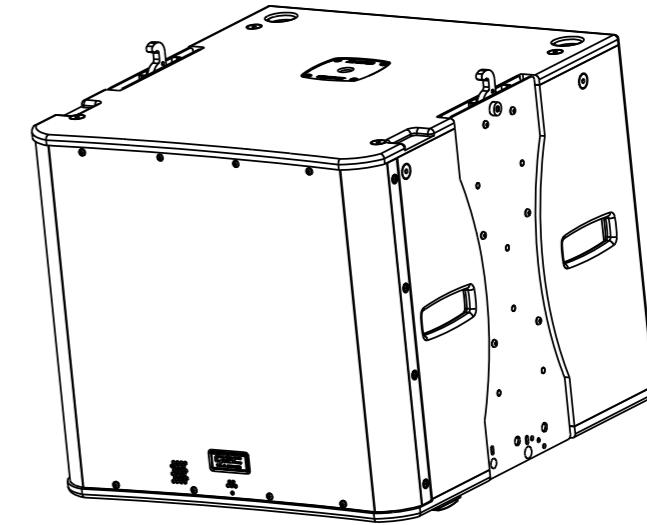
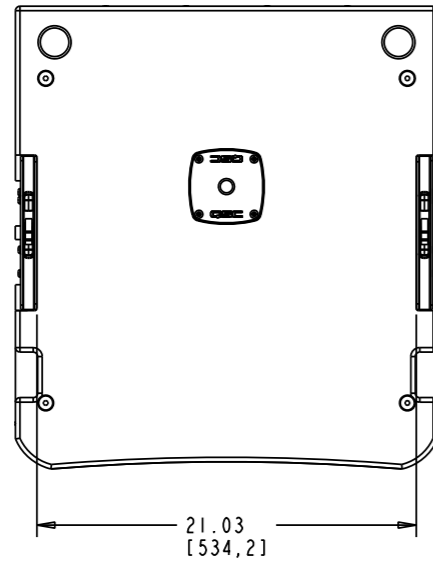


THIS DOCUMENT CONTAINS PROPRIETARY INFORMATION WHICH IS THE PROPERTY OF QSC AUDIO PRODUCTS. THAT MAY NOT BE DISCLOSED, REPRODUCED OR USED WITHOUT EXPRESS WRITTEN CONSENT FROM QSC AUDIO PRODUCTS.

REVISIONS					
REV	ECO	DESCRIPTION	BY	EFF DATE	ISSUED
A	10916	PRODUCTION RELEASE W.O. CHANGE	AA	20-JUN-11	DD
B	11012	ADD SC-000027-00, ITEM 32, QTY 2	MP	27-JUL-11	DD
BI	11153	FIXED VIEWS	AA	22-NOV-11	DD



ITEM	PART NUMBER	DESCRIPTION	QTY
32	SC-000027-00	SCREW, WOOD, PH, #8 X 0.500, BLACK	2
30	XD-000020-00	WOOFER, 18", PAPER, FERRITE, EMINENCE,	1
29	WP-212203-00	PCB ASSY, LED, SPKR, GRILLE	1
28	WP-001242-00	TOP COVER ASSY, UNIV SPLY, FULL RNG, 18" SUB, KLA181	1
27	WC-000515-00	WIRE HARNESS, KW181	1
26	SC-000384-00	SCR, HEX SKT, BTNHD, MACH, M6, 35 L	12
25	SC-000362-00	SCR, HEX SKT, BTNHD, MACH, M6, 50 L	4
24	SC-000347-00	SCR, PPH, PNH, M5, 35L, STL, BLK, ZIN	4
23	SC-000325-00	SCR, PPH, PNH, MACH, M5, 25 L, STL C	2
22	SC-000259-00	SCR, PPH, PNH, PARTICLE BD, #10, 5/8 L, STL, BLK, ZINC, CR3	16
21	SC-000226-00	SCR, HEX SKT, FLH, M10, 25L, BLK	8
20	SC-000217-00	SCR, PPH, FLH, M5, 20L, STL, BLK, ZINC CR3	16
19	SC-000215-00	SCR, PPH, PNH, M5, 30L, STL, BLK, ZIN	8
18	SC-000214-00	SCR, PPH, PNH, MACH, M5, 20 L, STL C	12
17	SB-000118-01	ENCLOSURE, ASSY, 18" KLA181	1
16	PL-000814-00	GASKET, O-RING, OD 7/16", ID 5/16", 1/16" THK	2
15	PL-000806-XX	FOOT COLLAR, KLA181	2
14	PL-000804-00	SHIM, LATCH, RIGGING, KLA181	4
13	PL-000740-XX	LOGO, QSC, KLA	1
12	PL-000739-01	FOOT, SIDE, KLA12, BLACK	2
11	PL-000168-00	RUBBER FOOT, 1.5"	2
10	PA-000267-00	FLEXIBLE LIGHT PIPE ASSY	1
9	NW-000168-00	WASHER, RETAINING, M8	2
8	MS-000401-00	DAMPING, FIBERGLASS, 2" X 13.5" 27"	3
7	HW-000224-00	RETAINING RING, .287" ID, .025" THK, EXT. SPIRAL, SS	2
6	HW-000214-00	LATCH, RIGGING, DRAW LATCH	2
5	CH-001094-XX	BOLT, HEX, CUSTOM, 8 MM, 1.5 L, KLA181	2
4	CH-001087-XX	GRILLE, KLA181	1
3	CH-001079-XX	RIGGING PLATES ASSY, LEFT, KLA181	1
2	CH-001078-XX	RIGGING PLATES ASSY, RIGHT, KLA181	1
1	CH-000889-00	POLE MOUNT, THREADED, M20, KSUB	1

7. THIS PART MUST BE ROHS COMPLIANT PER QSC RD-000160-00. SUPPLIER TO PROVIDE A CERTIFICATION OF ROHS COMPLIANCE.

- 6 MAX GAP ALLOWANCE BETWEEN GRILLE AND TOP AND BOTTOM PANELS SHOULD BE .080.
- 5 ENSURE PROPER SEATING OF HARDWARE AND TORQUE TO 46 KGF-CM. (40 LBS-IN).
- 4 ENSURE PROPER SEATING OF HARDWARE AND TORQUE TO 29 KGF-CM. (25 LBS-IN).
- 3 APPLY ADHESIVE GASKET (PS-000130-00) ON MATING SURFACES PRIOR TO INSTALLATION.
- 2 APPLY ADHESIVE GASKET (PS-000128-00) ON ENCLOSURE AT MATING SURFACES PRIOR TO INSTALLATION.

1. ALL DIMENSIONS NOT SHOWN ARE DERIVED FROM CONTROLLED DATA FILE: <DWG NO.> <CURRENT REV>.

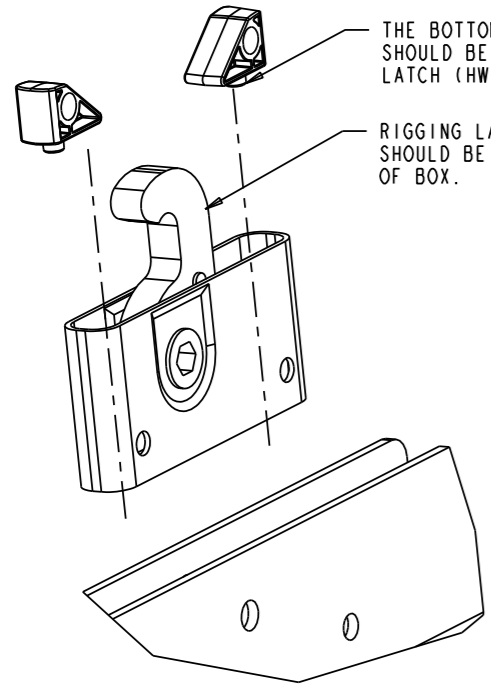
NOTE: UNLESS OTHERWISE SPECIFIED

BILL OF MATERIALS					
UNLESS OTHERWISE SPECIFIED DIMENSIONS IN INCHES (MM)		APPROVALS		DATE (DD-MMM-YY)	
TOLERANCES ARE:		DRAWN		10-AUG-10	
DECIMALS DECIMALS ANGLES		CHECKED		15-JUN-11	
.XX±.02(.5) .XXX±.01(.25) ± 1/2		MFG ENG			
DEBURR EDGES .010 (.25) R MAX		D. GALVAN		15-JUN-11	
MATERIAL		QA CHECK		15-JUN-11	
NONE		G. FUCHALA			
FINISH		DRAWING INFO:		SIZE	
NONE		WP-001237-01.B1.2		D	
		MODEL INFO: WP-001237-01.B1.2		CAGE CODE	
				00PW4	
		SCALE: 0.188		DRAWING NO.	
		DO NOT SCALE DRAWING		WP-001237-01	
		SHEET		REV	
		1 OF 2		B1	

QSC QSC AUDIO PRODUCTS, LLC
1675 MACARTHUR BOULEVARD
COSTA MESA, CA 92626

SPEAKER ASSY,
KLA 181,
BLK

THIS DOCUMENT CONTAINS PROPRIETARY INFORMATION WHICH IS THE PROPERTY OF OSC AUDIO PRODUCTS. THAT MAY NOT BE DISCLOSED, REPRODUCED OR USED WITHOUT EXPRESS WRITTEN CONSENT FROM OSC AUDIO PRODUCTS.

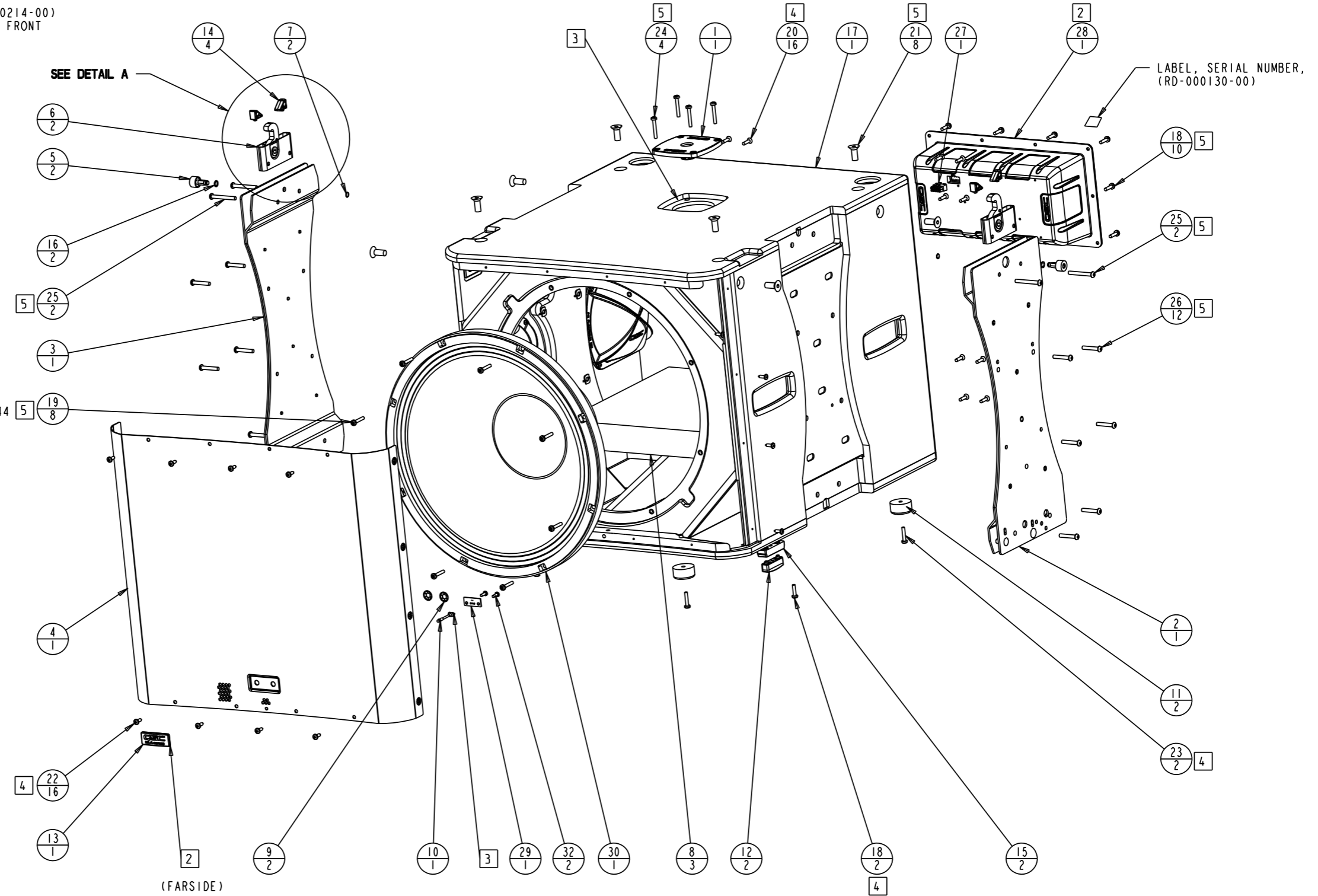


THE BOTTOM DIMPLE OF LATCH SHIM (PL-000804-00) SHOULD BE PLACED IN THE BOTTOM HOLE ON THE LATCH (HW-000214-00).

RIGGING LATCH (HW-000214-00) SHOULD BE FACING THE FRONT OF BOX.

DETAIL A
SCALE 1000

USE LOCTITE 444



(FAR SIDE)

SIZE	CAGE CODE	DRAWING NO.	REV
D	00PW4	WP-001237-01	B1
SCALE:	0.188	DO NOT SCALE DRAWING	SHEET 2 OF 2

QSC Digital Paper - Document Status: PRODUCTION