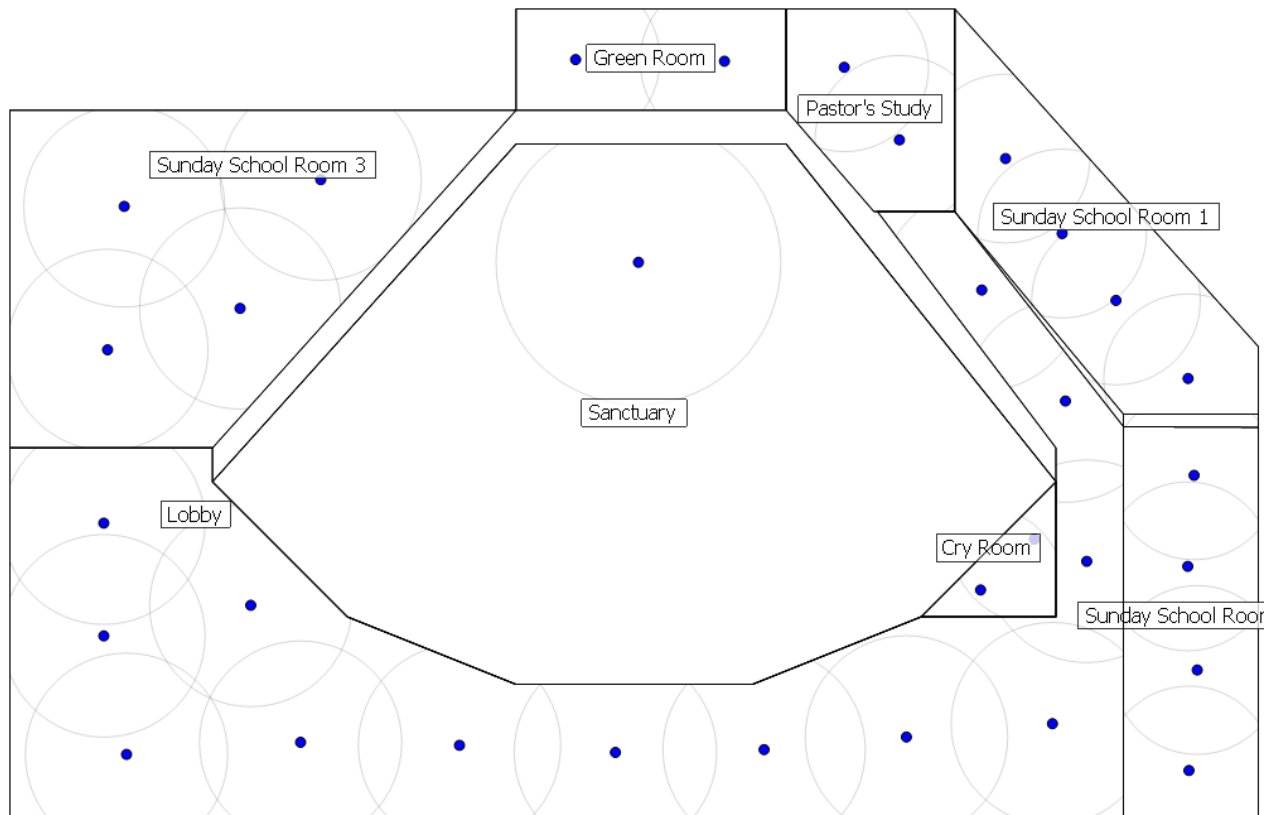


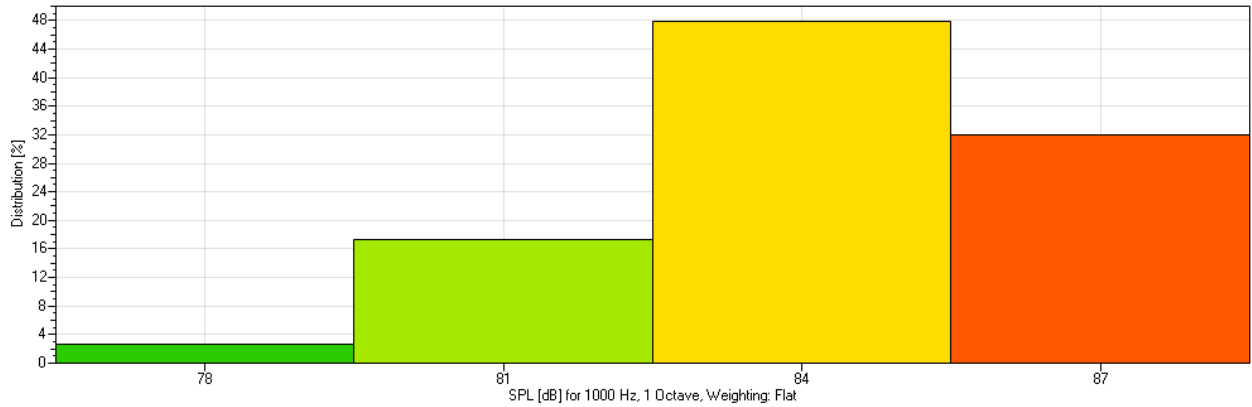
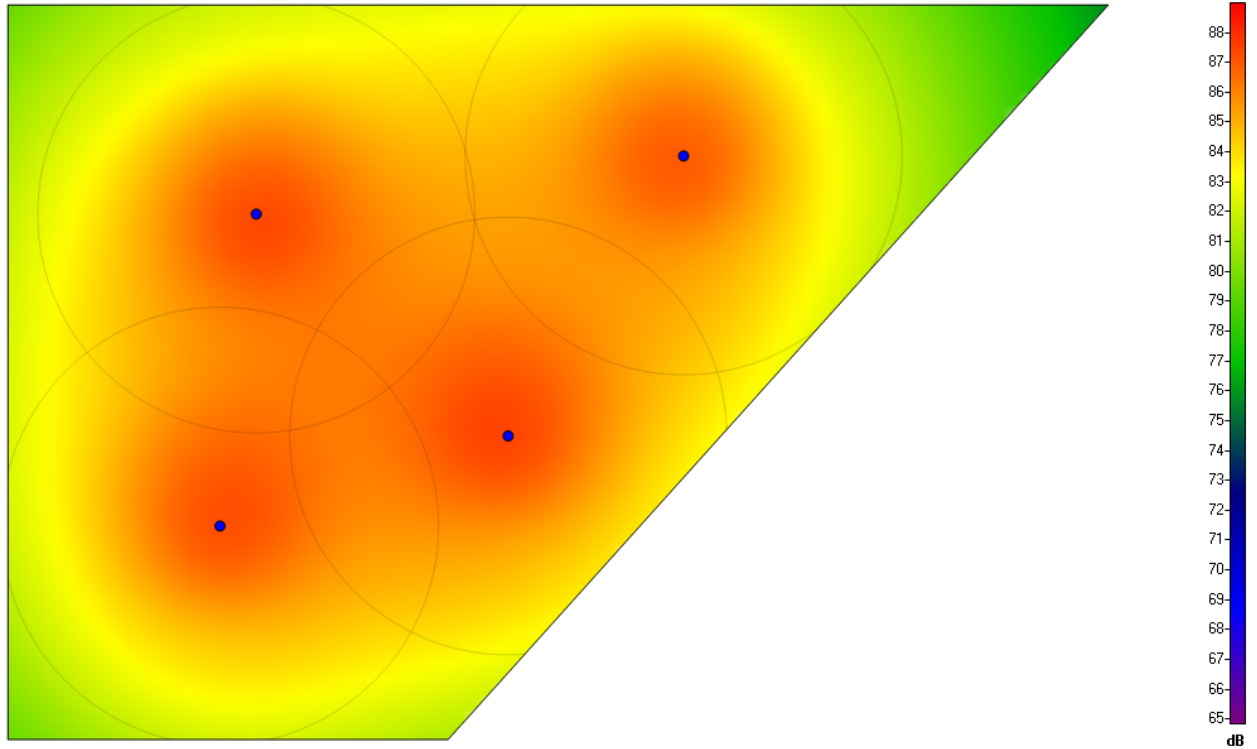
## Project Information

<b>Title:</b>	House of Worship System Model
<b>Author:</b>	Joe Etrick
<b>Company:</b>	QSC Audio Products, LLC
<b>Notes:</b>	This project was modeled as an example of the use of the DSP322ua digital signal processor and accessories in a typical House of Worship application. It was modeled in EASE Address which is available on the QSC website.
<b>Temperature:</b>	68.0°F
<b>Pressure:</b>	Standard (29.8 inHg)
<b>Humidity:</b>	Standard (60%)
<b>Mapping:</b>	1000 Hz (1 Octave), Weighting: Flat
<b>Input Signal Type:</b>	Program (IEC 60268)
<b>Calculation Accuracy:</b>	Fast Approximation
<b>Summary Loudspeakers:</b>	
	<b>Amount      Type</b>
	18      AD-C42T (QSC Audio)
	1      AD-S282 (QSC Audio)
	15      AD-C52ST (QSC Audio)

## Layout Overview



### Room: Sunday School Room 3



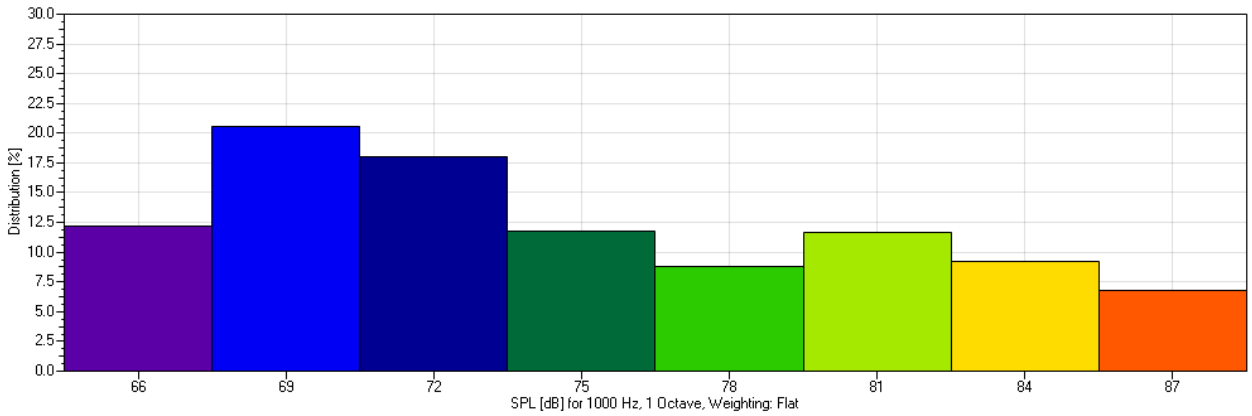
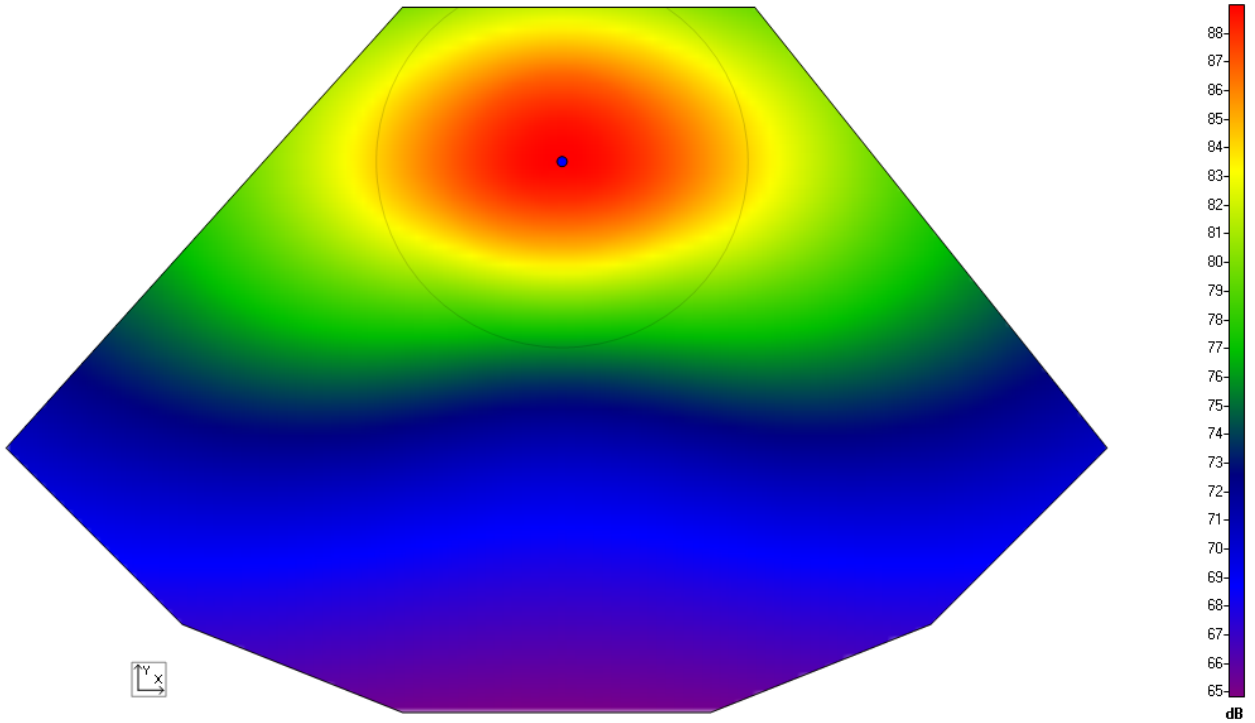
<b>Label:</b>	Sunday School Room 3
<b>Room Height:</b>	9.00 ft
<b>Ear Height:</b>	4.00 ft
<b>Network Voltage:</b>	70.7 V
<b>Power Consumption:</b>	30W
<b>Summary Loudspeakers:</b>	
	<b>Amount      Type</b>
	4            AD-C42T (QSC Audio)

<b>Room Layout:</b>	<b>Nr.</b>	<b>X [ft]</b>	<b>Y [ft]</b>
	1	-20.07	15.16
	2	-2.07	35.16

	3	-32.07	35.16
	4	-32.07	15.16

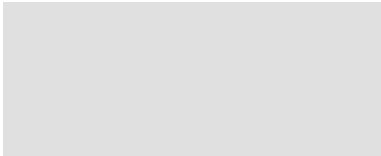
<b>Loudspeakers:</b>	<b>Nr.</b>	<b>Type</b>	<b>X [ft]</b>	<b>Y [ft]</b>	<b>Tap Settings</b>
	1	AD-C42T (QSC Audio)	-25.31	29.47	7.5 W (US Standard)
	2	AD-C42T (QSC Audio)	-13.65	31.05	7.5 W (US Standard)
	3	AD-C42T (QSC Audio)	-26.29	20.98	7.5 W (US Standard)
	4	AD-C42T (QSC Audio)	-18.44	23.43	7.5 W (US Standard)

### Room: Sanctuary



<b>Label:</b>	Sanctuary
<b>Room Height:</b>	15.00 ft
<b>Ear Height:</b>	4.00 ft
<b>Network Voltage:</b>	70.7 V
<b>Power Consumption:</b>	25W
<b>Summary Loudspeakers:</b>	
	<b>Amount      Type</b>
	1      AD-S282 (QSC Audio)

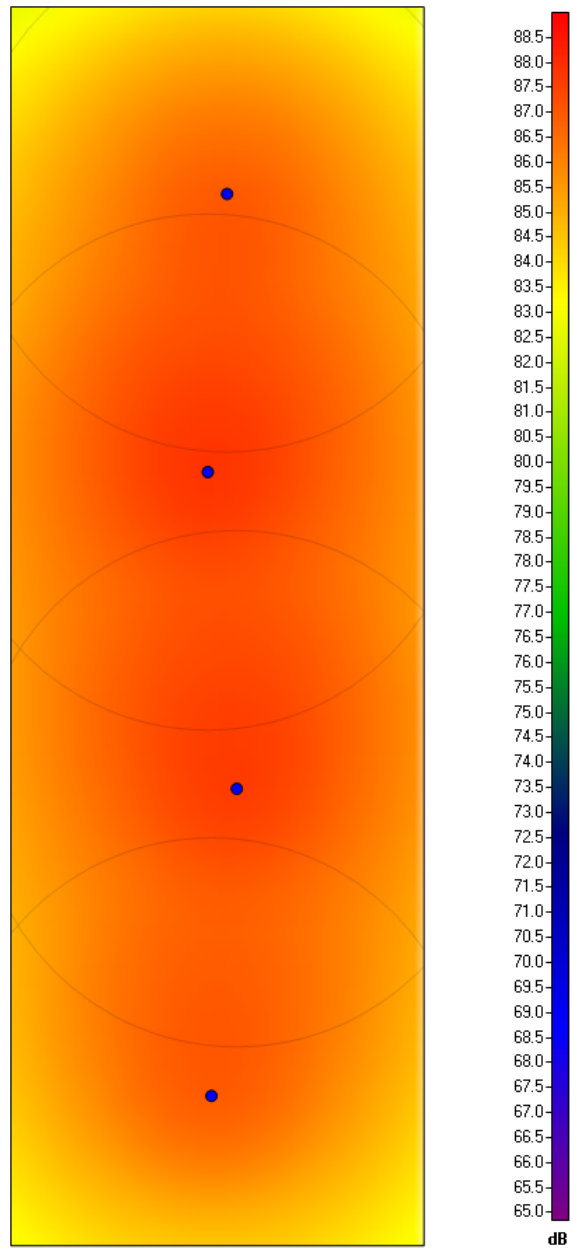
<b>Room Layout:</b>	<b>Nr.</b>	<b>X [ft]</b>	<b>Y [ft]</b>
	1	12.00	30.99
	2	28.00	30.99
	3	44.00	10.99

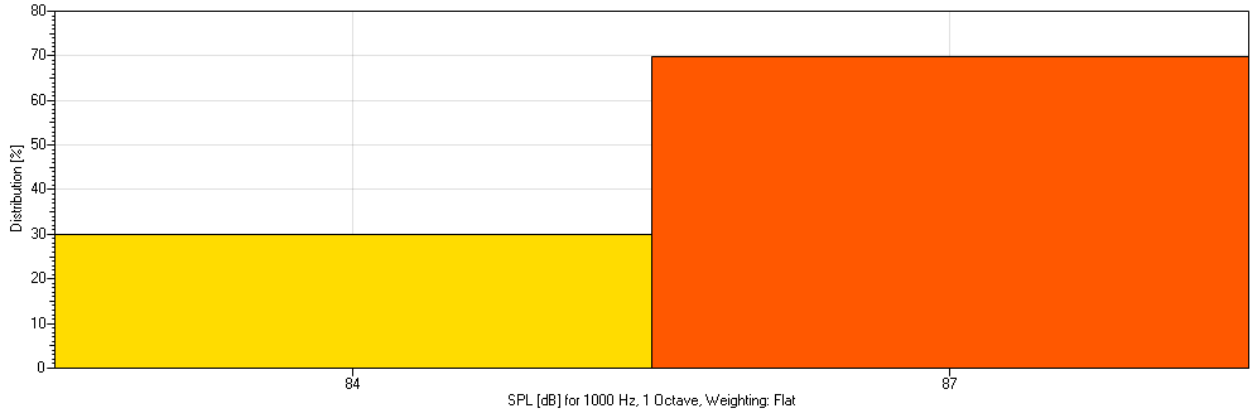


4	36.00	2.99
5	26.00	-1.01
6	12.00	-1.01
7	2.00	2.99
8	-6.00	10.99

<b>Loudspeakers:</b>	<b>Nr.</b>	<b>Type</b>	<b>X [ft]</b>	<b>Y [ft]</b>	<b>Tap Settings</b>
	1	AD-S282 (QSC Audio)	19.25	23.99	25 W (US Standard)

## Room: Sunday School Room 2





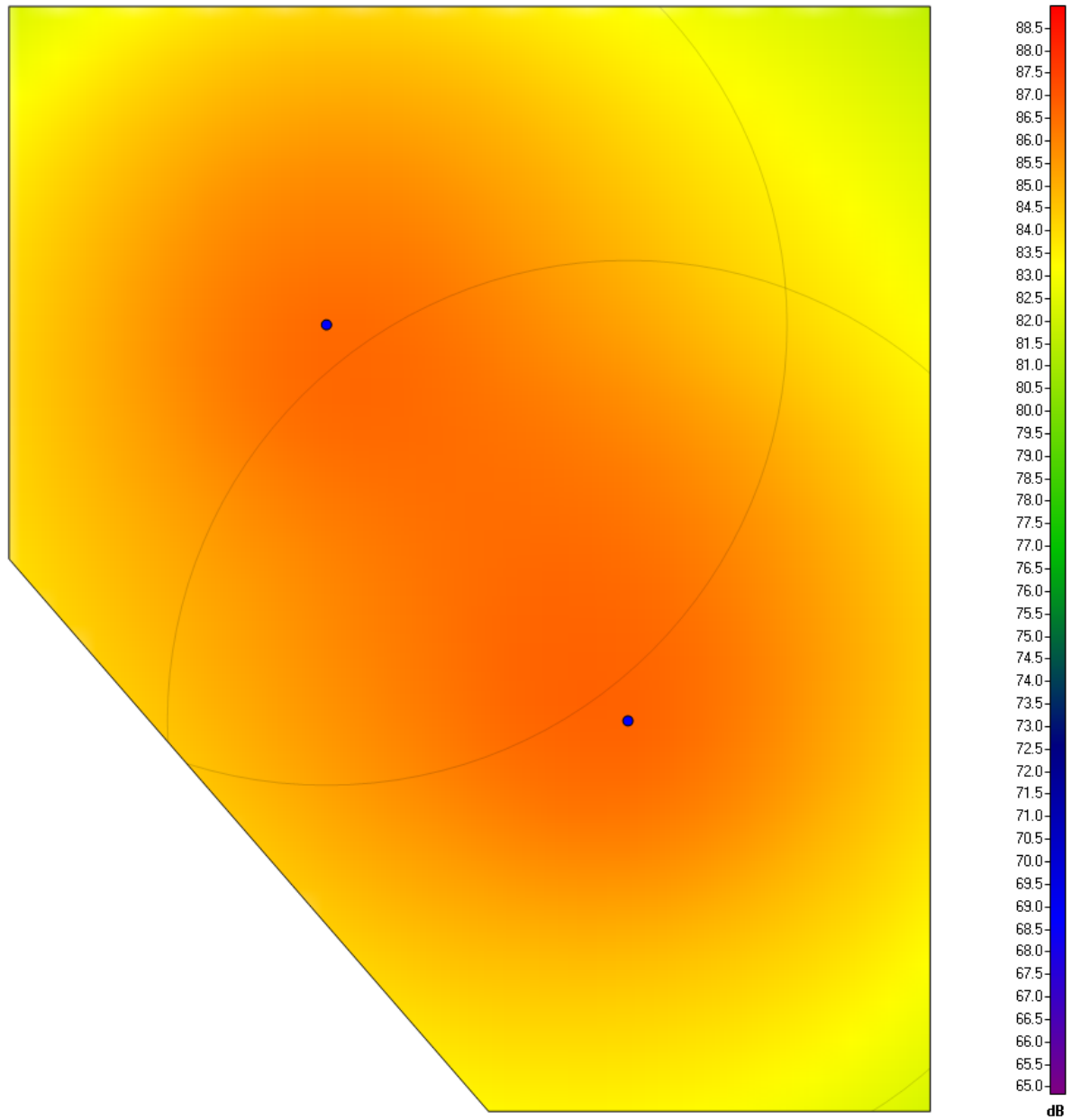
**Label:** Sunday School Room 2  
**Room Height:** 9.00 ft  
**Ear Height:** 4.00 ft  
**Network Voltage:** 70.7 V  
**Power Consumption:** 30W

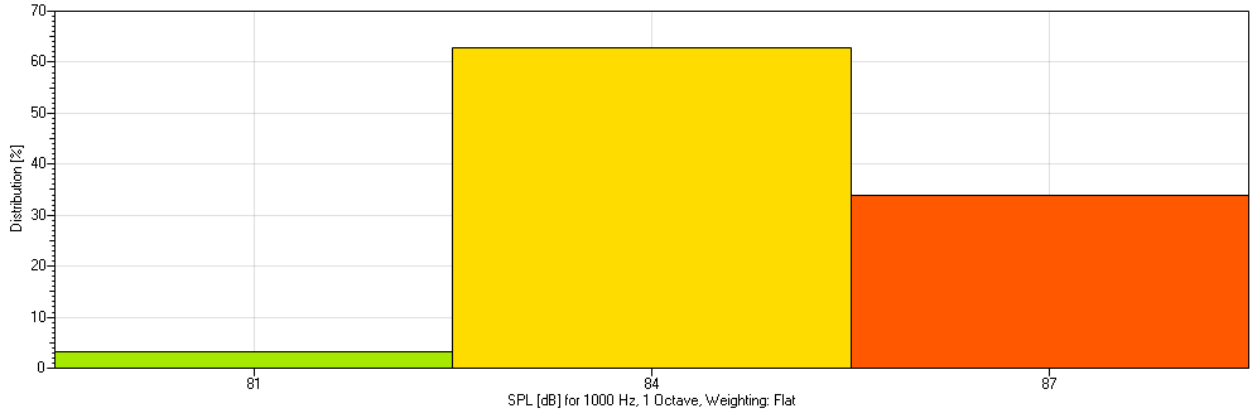
Summary Loudspeakers:	Amount	Type
	4	AD-C42T (QSC Audio)

Room Layout:	Nr.	X [ft]	Y [ft]
	1	42.00	-30.00
	2	42.00	-54.00
	3	34.00	-54.00
	4	34.00	-30.00

Loudspeakers:	Nr.	Type	X [ft]	Y [ft]	Tap Settings
	1	AD-C42T (QSC Audio)	38.19	-33.62	7.5 W (US Standard)
	2	AD-C42T (QSC Audio)	37.81	-39.01	7.5 W (US Standard)
	3	A AD-C42T (QSC Audio)	38.37	-45.15	7.5 W (US Standard)
	4	A AD-C42T (QSC Audio)	37.88	-51.10	7.5 W (US Standard)

### Room: Pastor's Study





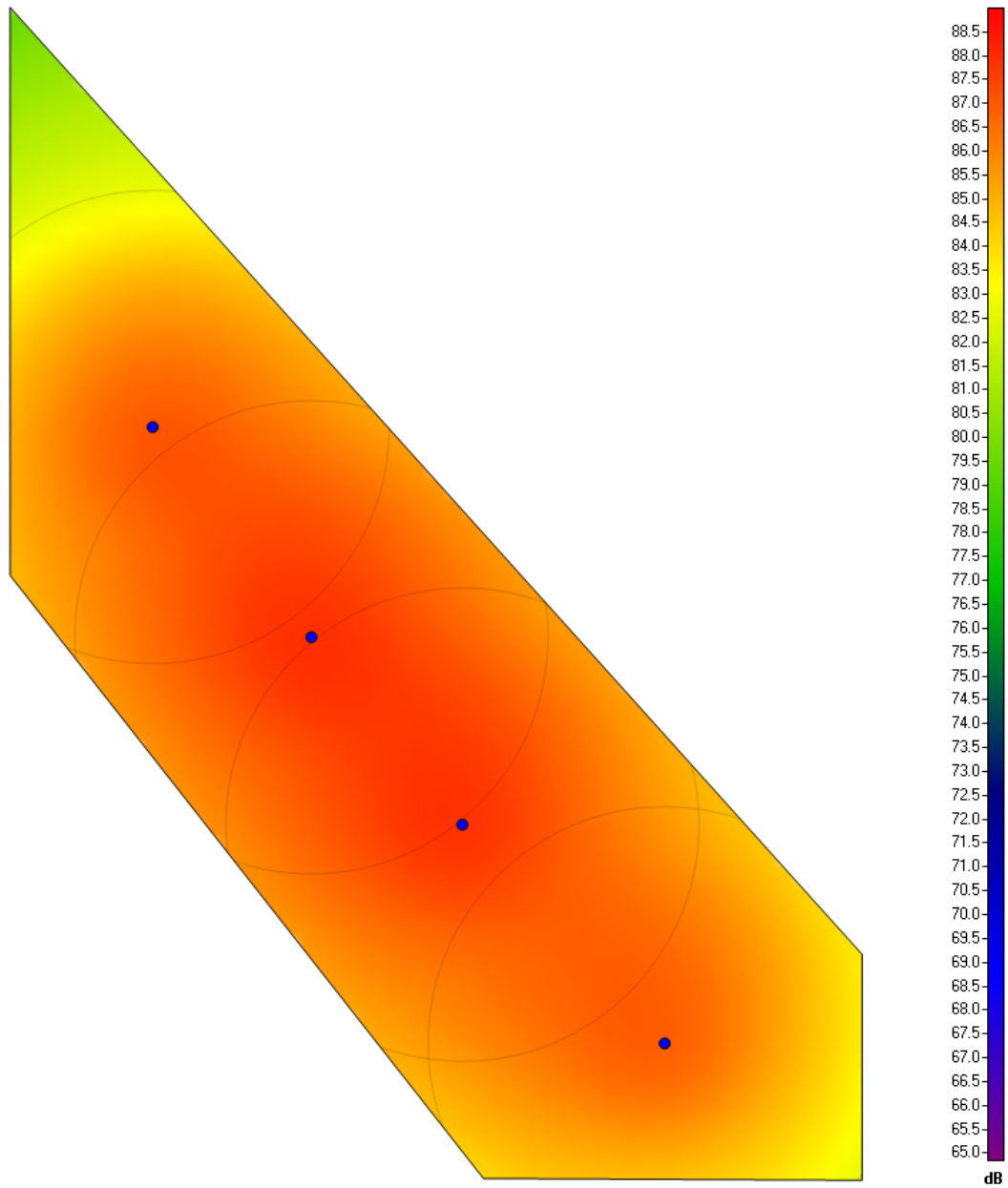
**Label:** Pastor's Study  
**Room Height:** 9.00 ft  
**Ear Height:** 4.00 ft  
**Network Voltage:** 70.7 V  
**Power Consumption:** 15W

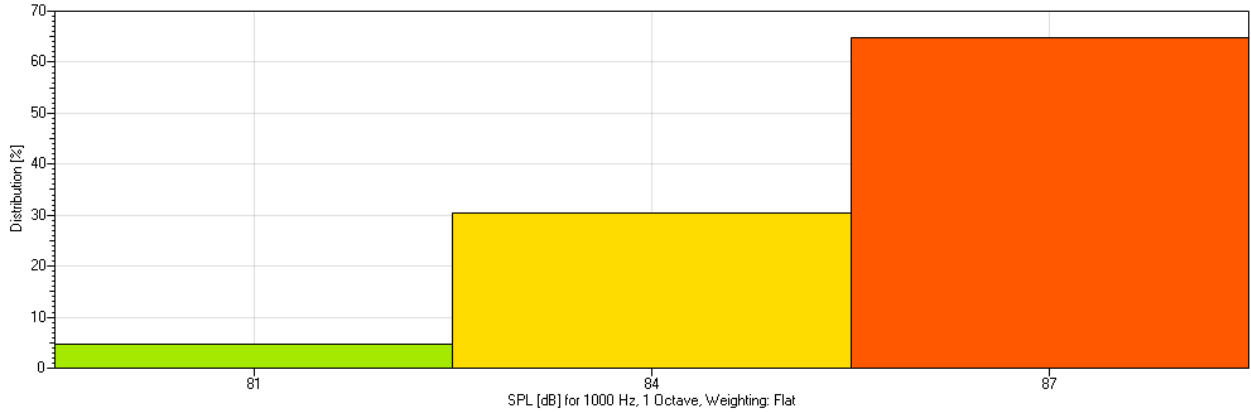
Summary Loudspeakers:	Amount	Type
	2	AD-C42T (QSC Audio)

Room Layout:	Nr.	X [ft]	Y [ft]
	1	54.00	6.31
	2	64.00	6.31
	3	64.00	-5.69
	4	59.21	-5.69
	5	54.00	0.31

Loudspeakers:	Nr.	Type	X [ft]	Y [ft]	Tap Settings
	1	AD-C42T (QSC Audio)	57.45	2.86	7.5 W (US Standard)
	2	AD-C42T (QSC Audio)	60.72	-1.45	7.5 W (US Standard)

### Room: Sunday School Room 1





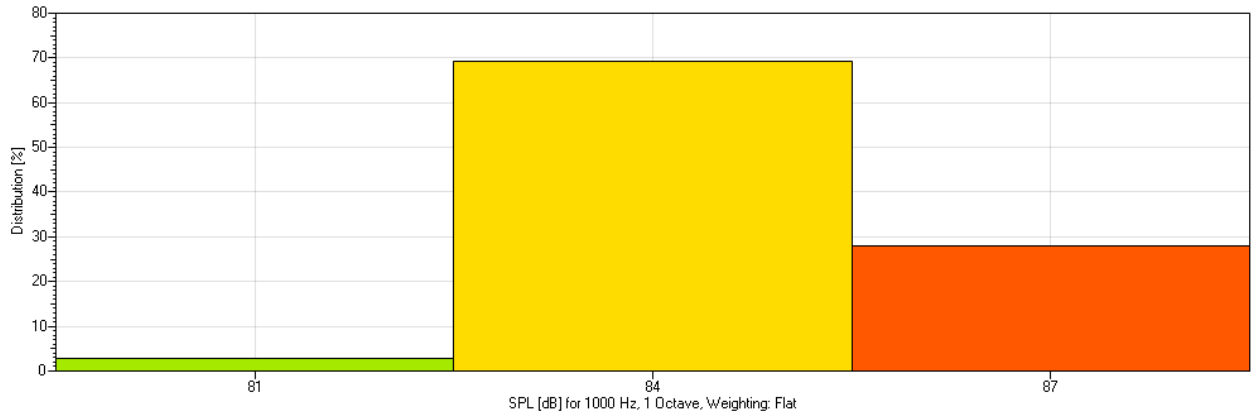
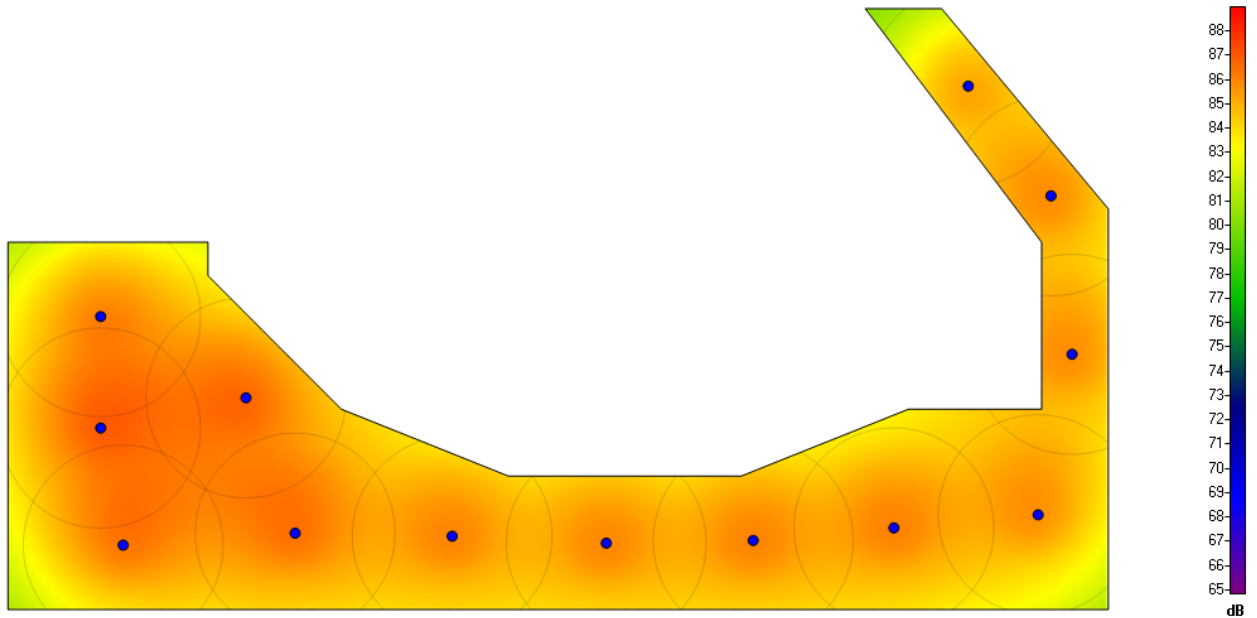
**Label:** Sunday School Room 1  
**Room Height:** 9.00 ft  
**Ear Height:** 4.00 ft  
**Network Voltage:** 70.7 V  
**Power Consumption:** 30W

Summary Loudspeakers:	Amount	Type
	4	AD-C42T (QSC Audio)

Room Layout:	Nr.	X [ft]	Y [ft]
	1	52.00	40.00
	2	70.00	20.00
	3	70.00	15.23
	4	62.00	15.26
	5	52.00	28.00

Loudspeakers:	Nr.	Type	X [ft]	Y [ft]	Tap Settings
	1	AD-C42T (QSC Audio)	55.01	31.14	7.5 W (US Standard)
	2	AD-C42T (QSC Audio)	58.36	26.70	7.5 W (US Standard)
	3	AD-C42T (QSC Audio)	61.56	22.74	7.5 W (US Standard)
	4	AD-C42T (QSC Audio)	65.83	18.12	7.5 W (US Standard)

### Room: Lobby



**Label:** Lobby  
**Room Height:** 11.00 ft  
**Ear Height:** 5.00 ft  
**Network Voltage:** 70.7 V  
**Power Consumption:** 98W

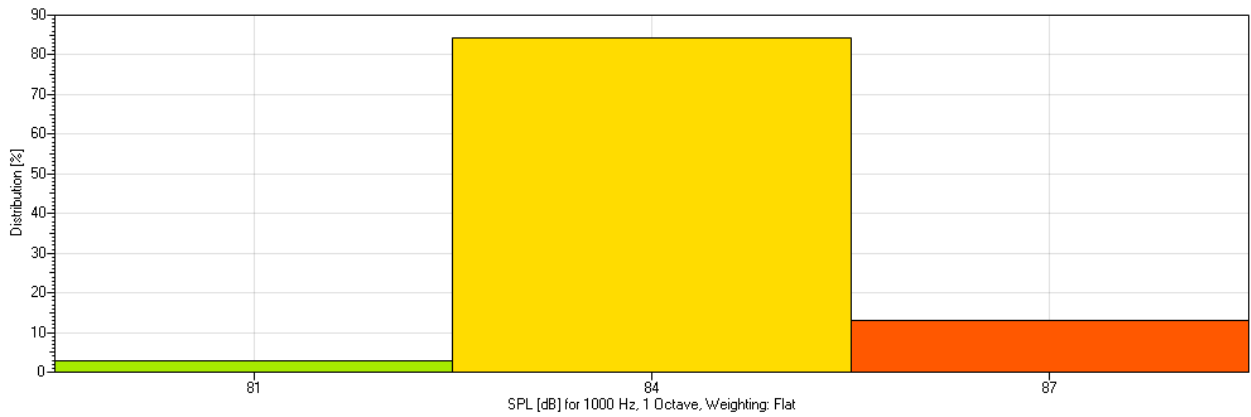
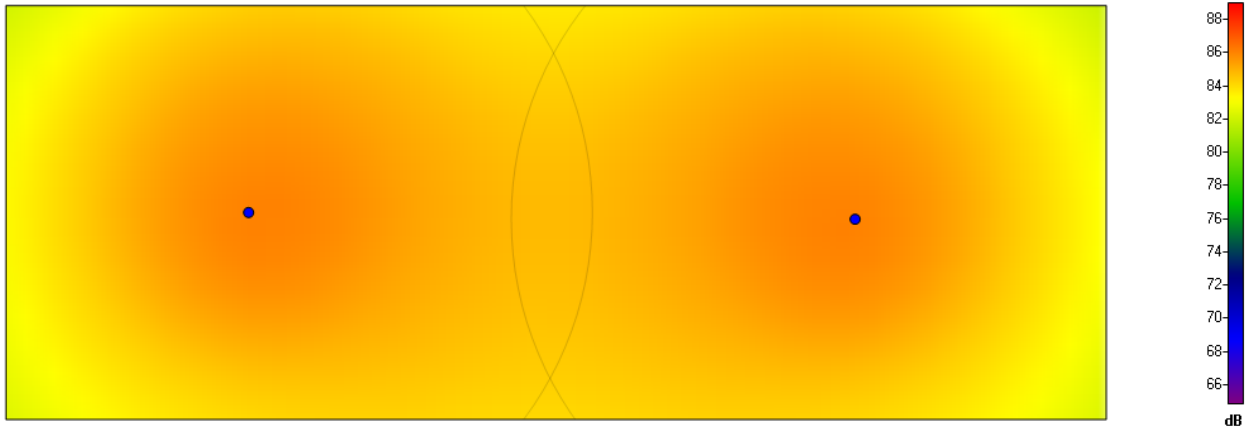
Summary Loudspeakers:	Amount	Type
	13	AD-CI52ST (QSC Audio)

Room Layout:	Nr.	X [ft]	Y [ft]
	1	12.09	0.11
	2	12.09	14.11
	3	24.09	14.11
	4	24.09	12.11
	5	32.09	4.11
	6	42.09	0.11
	7	56.09	0.11

	8	66.09	4.11
	9	74.09	4.11
	10	74.09	12.11
	11	74.09	14.11
	12	63.51	28.11
	13	68.09	28.11
	14	78.09	16.11
	15	78.09	4.11
	16	78.09	-7.89
	17	12.09	-7.89

<b>Loudspeakers:</b>	<b>Nr.</b>	<b>Type</b>	<b>X [ft]</b>	<b>Y [ft]</b>	<b>Tap Settings</b>
	1	AD-CI52ST (QSC Audio)	69.70	23.47	7.5 W (US Standard)
	2	AD-CI52ST (QSC Audio)	17.65	9.66	7.5 W (US Standard)
	3	AD-CI52ST (QSC Audio)	75.92	7.40	7.5 W (US Standard)
	4	AD-CI52ST (QSC Audio)	17.65	2.99	7.5 W (US Standard)
	5	AD-CI52ST (QSC Audio)	26.37	4.80	7.5 W (US Standard)
	6	AD-CI52ST (QSC Audio)	38.74	-3.49	7.5 W (US Standard)
	7	AD-CI52ST (QSC Audio)	56.79	-3.75	7.5 W (US Standard)
	8	AD-CI52ST (QSC Audio)	65.23	-3.00	7.5 W (US Standard)
	9	AD-CI52ST (QSC Audio)	73.88	-2.21	7.5 W (US Standard)
	10	AD-CI52ST (QSC Audio)	19.00	-4.03	7.5 W (US Standard)
	11	AD-CI52ST (QSC Audio)	29.32	-3.31	7.5 W (US Standard)
	12	AD-CI52ST (QSC Audio)	74.66	16.90	7.5 W (US Standard)
	13	AD-CI52ST (QSC Audio)	47.98	-3.91	7.5 W (US Standard)

### Room: Green Room



**Label:** Green Room  
**Room Height:** 9.00 ft  
**Ear Height:** 4.00 ft  
**Network Voltage:** 70.7 V  
**Power Consumption:** 15W  
**Summary Loudspeakers:**

Amount	Type
2	AD-CI52ST (QSC Audio)

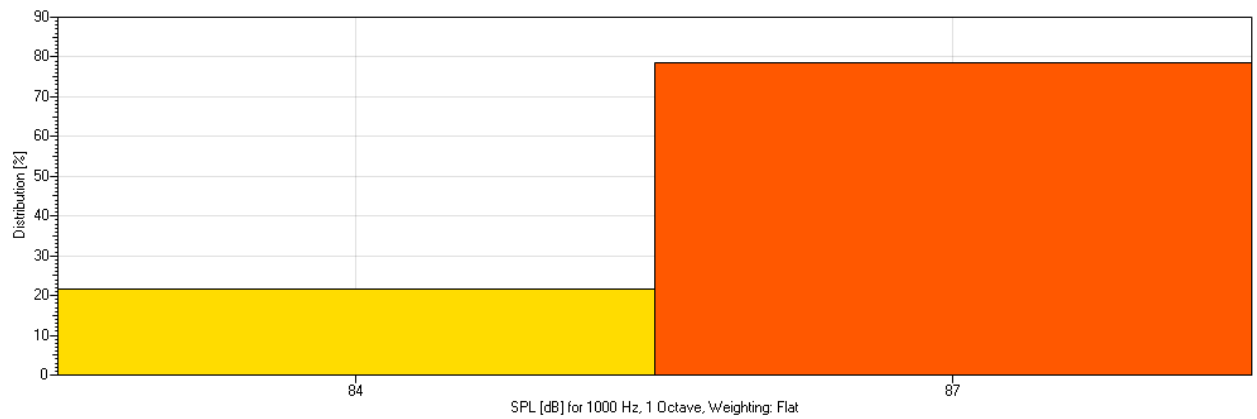
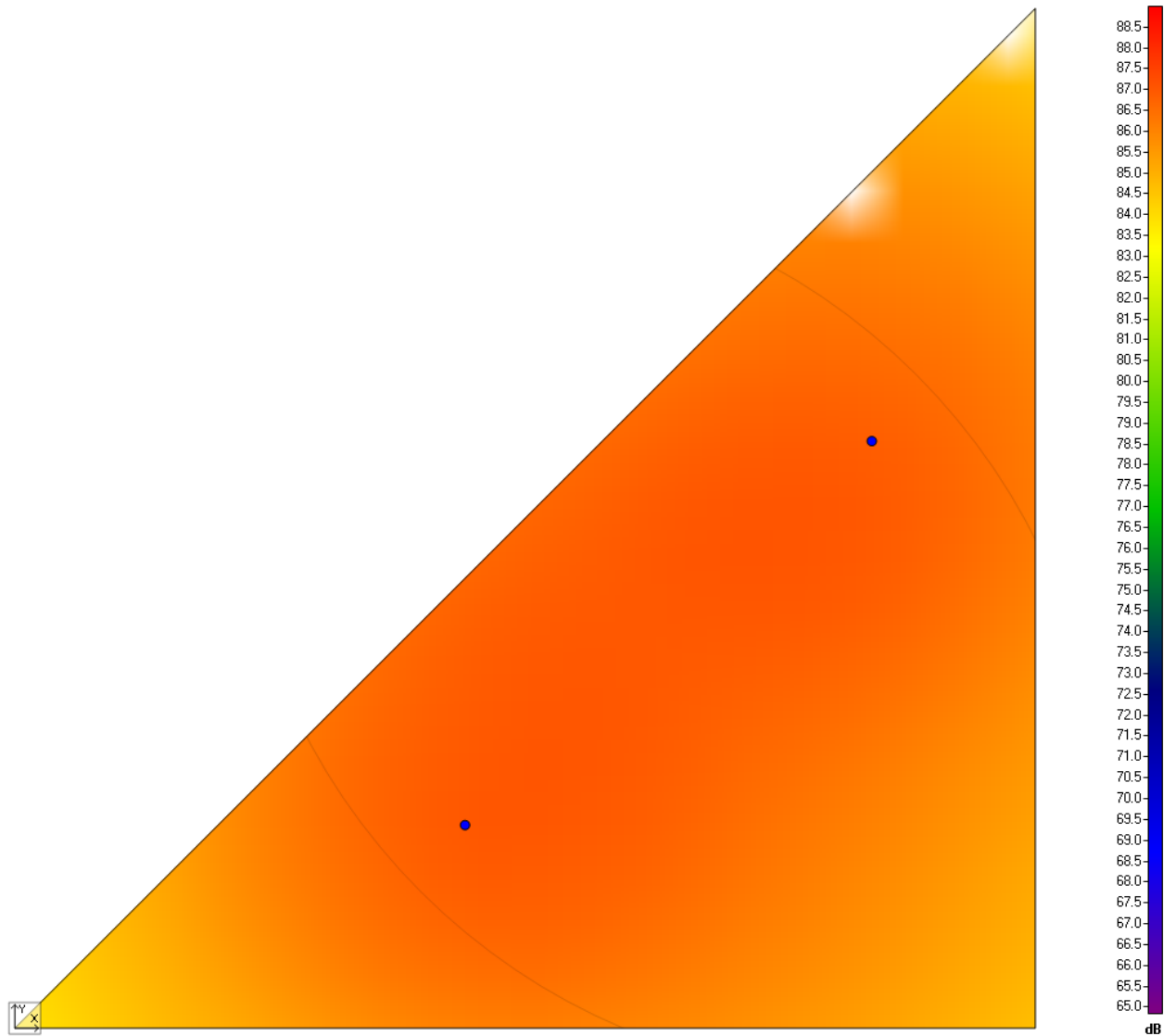
**Room Layout:**

Nr.	X [ft]	Y [ft]
1	12.00	0.00
2	28.00	0.00
3	28.00	-6.00
4	12.00	-6.00

**Loudspeakers:**

Nr.	Type	X [ft]	Y [ft]	Tap Settings
1	AD-CI52ST (QSC Audio)	15.53	-3.00	7.5 W (US Standard)
2	AD-CI52ST (QSC Audio)	24.35	-3.10	7.5 W (US Standard)

### Room: Cry Room



**Label:** Cry Room  
**Room Height:** 9.00 ft  
**Ear Height:** 4.00 ft  
**Network Voltage:** 70.7 V  
**Power Consumption:** 15W

<b>Summary Loudspeakers:</b>	<b>Amount</b>	<b>Type</b>
	2	AD-C42T (QSC Audio)

<b>Room Layout:</b>	<b>Nr.</b>	<b>X [ft]</b>	<b>Y [ft]</b>
	1	0.00	0.00
	2	8.00	0.00
	3	8.00	8.00

<b>Loudspeakers:</b>	<b>Nr.</b>	<b>Type</b>	<b>X [ft]</b>	<b>Y [ft]</b>	<b>Tap Settings</b>
	1	AD-C42T (QSC Audio)	6.72	4.61	7.5 W (US Standard)
	2	AD-C42T (QSC Audio)	3.53	1.59	7.5 W (US Standard)